

# Stop Gate, damped VE 1/D



- ▶ Pneumatic stop gate. When the pressure is released the stop gate is closed by a spring and the workpiece pallet is stopped
- ▶ Pneumatic damping can be adapted to the workpiece pallet weight
- ▶ Workpiece pallet minimum weight: 0.5 kg
- ▶ Permissible total load of all workpiece pallets in the accumulation: 12 kg (with conveying speed 6 m/min)

The stop gates are used to stop workpiece pallets. Actuation is performed pneumatically. In an unpressurized state, the stop gate is held in the blocking position by a

spring and thus contributes significantly to production safety. The stop gate VE 1/D is used when conveying impact-sensitive parts.

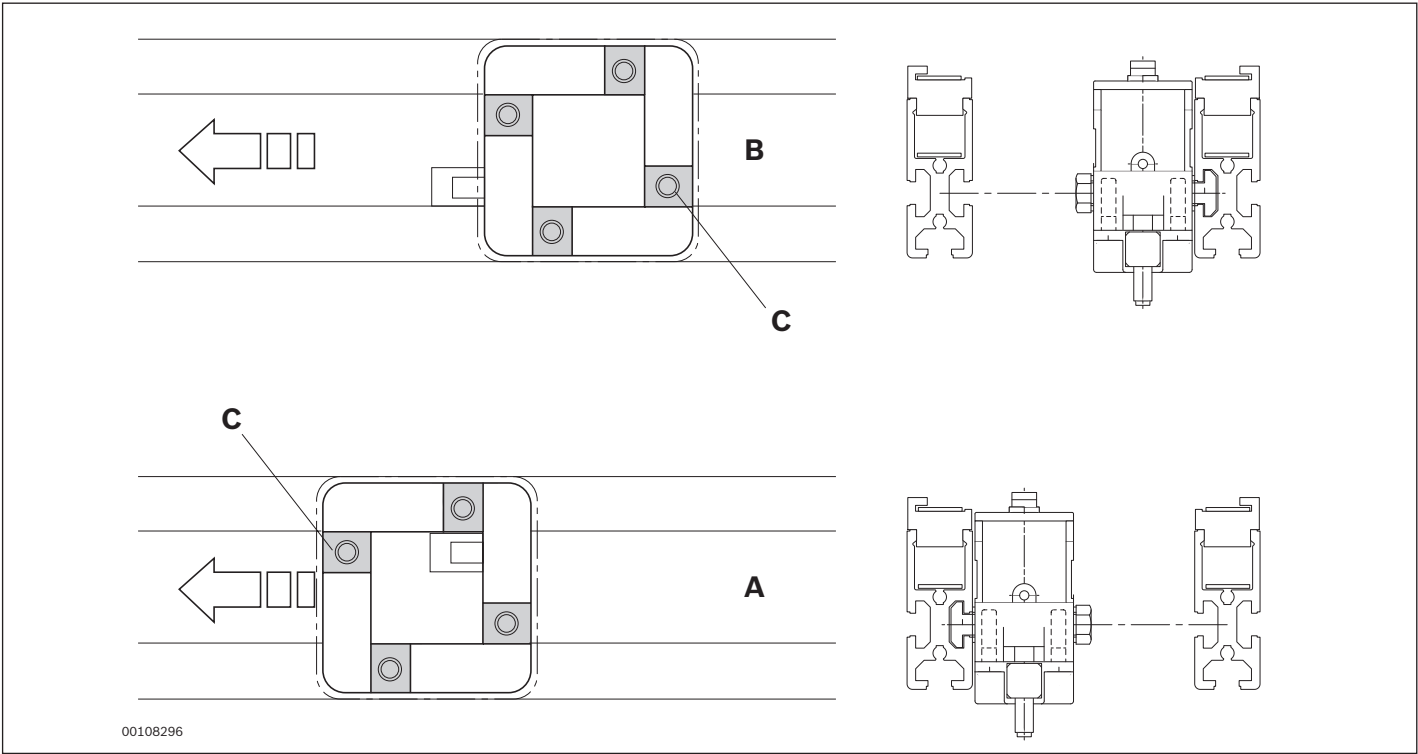
### Recommended accessories

- ▶ Switch Bracked

### Ordering information

Product description	Material number
Stop Gate VE 1/D	3842547758

The data specified above only serves to describe the product. Due to the continuing development of our products, no statements concerning a certain condition or suitability for a certain application can be derived from our information. The information given does not exempt the user from the obligation of own judgment and verification. It must be remembered that our products are subject to a natural process of wear and aging.



Can be fastened to the section profile inside on the right (A) or on the left (B).

Technical data

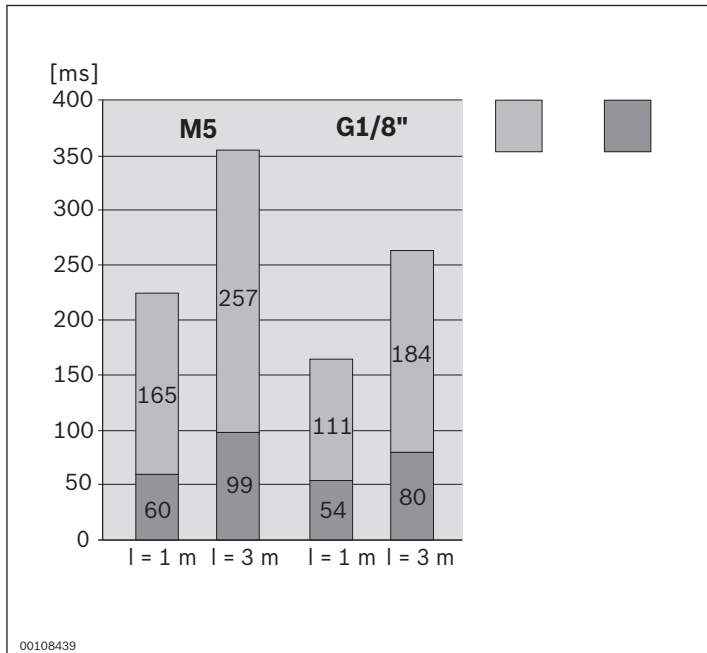
Material number			3842547758
Required compressed air connection	p	bar	4 ...6 bar
Max. section load in accumulation operation		kg	12
Pneumatic push-in fitting	Ø	mm	4
Cleanroom class			ISO class 7
Dry room	r.F.	%	<1

Permissible accumulation load

m <sub>G</sub>	v <sub>N</sub>
kg	m/min
12	6
10	9
10	12
10	15
8	18

The data specified above only serves to describe the product. Due to the continuing development of our products, no statements concerning a certain condition or suitability for a certain application can be derived from our information. The information given does not exempt the user from the obligation of own judgment and verification. It must be remembered that our products are subject to a natural process of wear and aging.

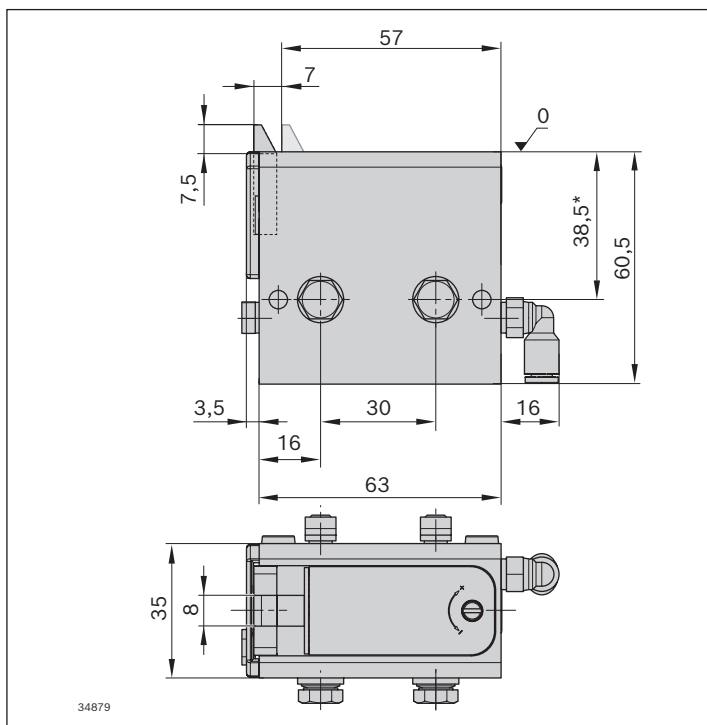
## Opening and shutting times



\* = open

- 1) Close
- 2) Open 4 bar
- 3) l = hose length

## Dimensions



The data specified above only serves to describe the product. Due to the continuing development of our products, no statements concerning a certain condition or suitability for a certain application can be derived from our information. The information given does not exempt the user from the obligation of own judgment and verification. It must be remembered that our products are subject to a natural process of wear and aging.